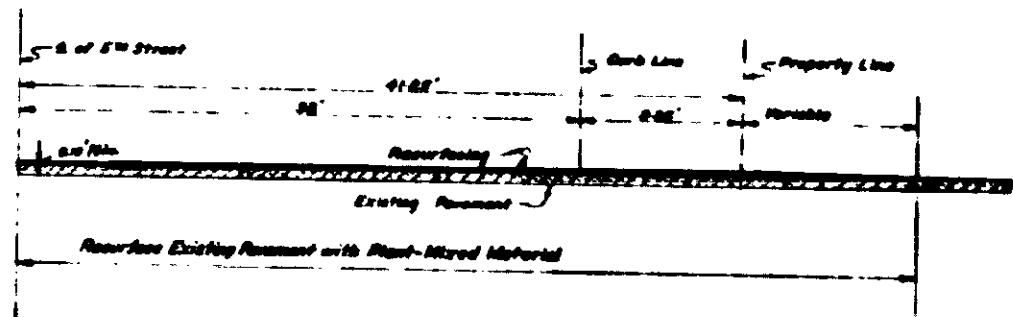
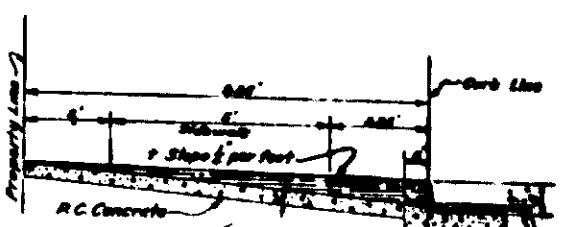


TYPICAL SECTION OF PAVEMENT
Scale - Horizontal 1/4" = 1'-0", Vertical 1/4" = 1'-0"

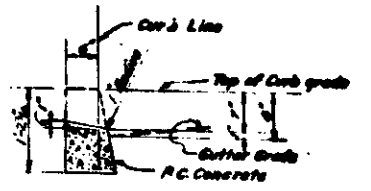


TYPICAL HALF SECTION OF PAVEMENT ON CENTER LINE OF INTERSECTING STREET.
Scale - Horizontal 1/4" = 1'-0", Vertical 1/4" = 1'-0"



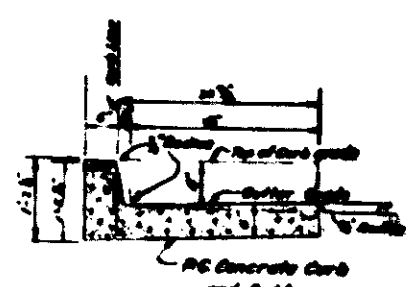
TYPICAL SECTION OF DRIVEWAYS
Scale 1/4" = 1'-0"

NOTE - All Existing R.C. Driveway openings less than 18" wide shall be reconstructed 18" wide.
Commercial driveways are shown thus on Plan - common.
NOTE - Remove Existing sidewalk for 3' each side of driveway and reconstruct to new line and grade.

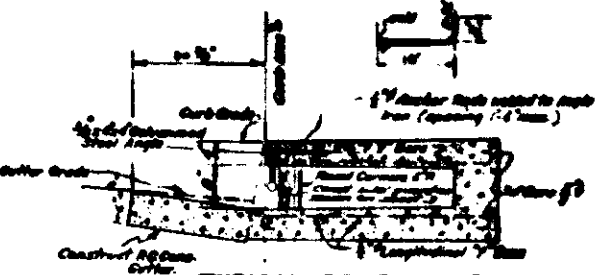


TYPICAL SECTION OF DEPRESSED CURB
Scale - 1/4" = 1'-0"

NOTE - A 1/2" Expansion Joint shall be constructed thru all curbs, gutters and sidewalks at locations shown on plans at curb returns and at 60' intervals.
Depressed Curb shall be constructed at all existing dirt driveways.

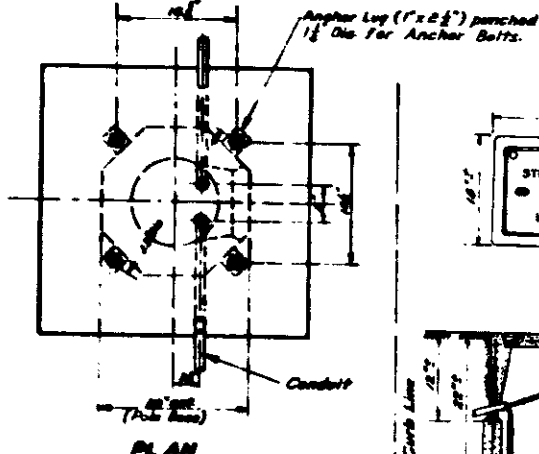


TYPICAL SECTION OF CURB AND GUTTER
Scale 1/4" = 1'-0"



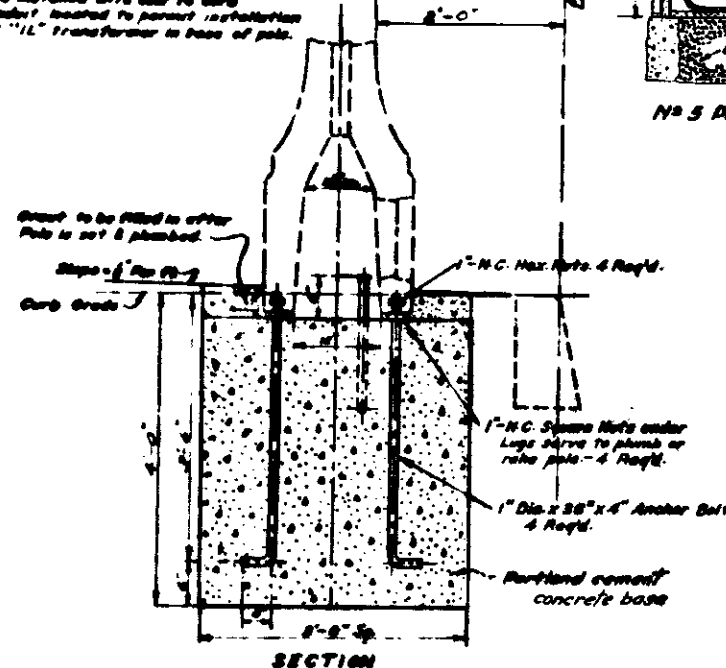
TYPICAL SECTION OF INLET OR OUTLET (Curb Return)
Scale 1/4" = 1'-0"

NOTE - Except as noted, top of gutter and sidewalk shall conform to clear-surface slope and finish of sidewalk.



PLAN

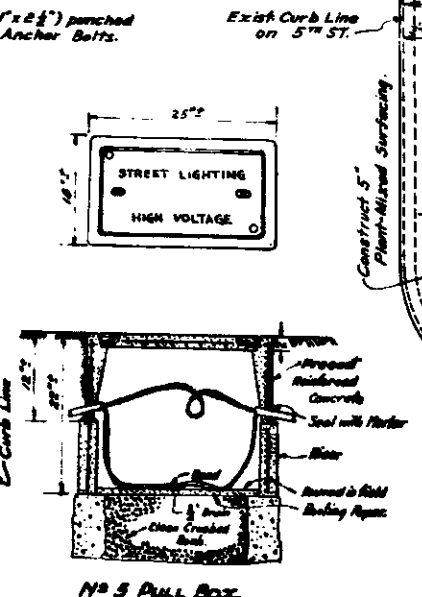
NOTES
1. Pole located with clear to curb
2. Conduit located to permit installation of "IL" transformer in base of pole.



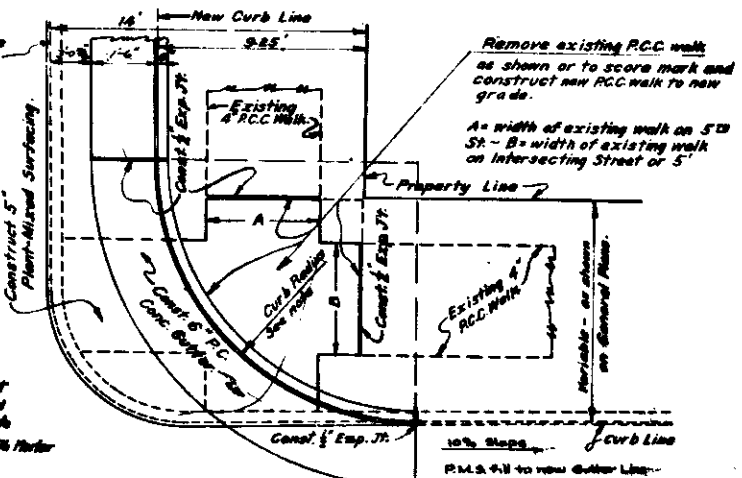
SECTION

DETAIL OF ELECTROLIER FOUNDATION
Scale - 1" = 1'-0"

Make R.C. base with anchor bolts, rube and conduit and installation of Electrolier to be included in this contract.

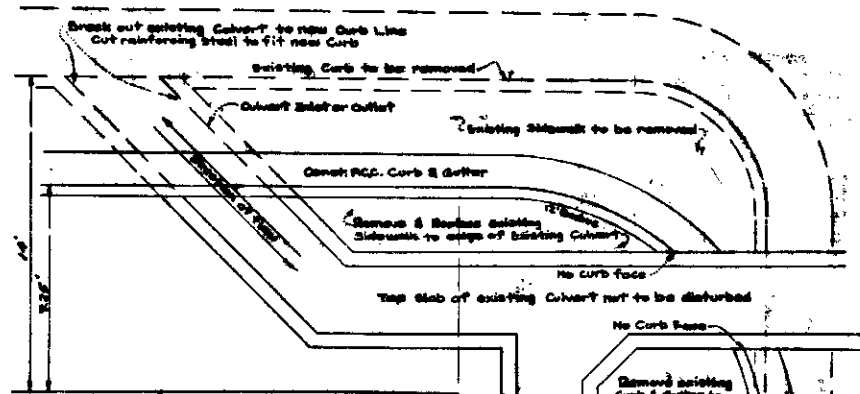


NO. 5 PULL BOX.



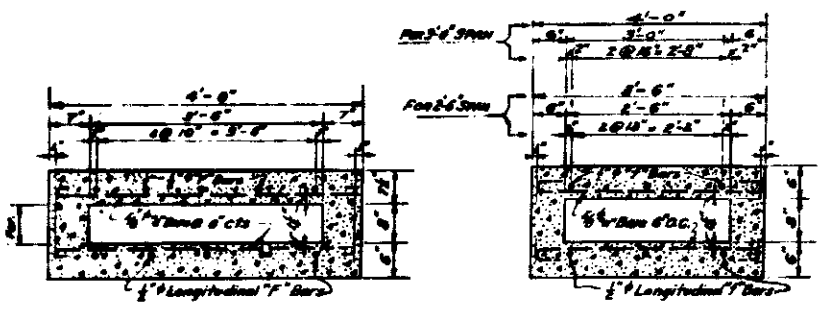
TYPICAL PLAN OF RETURN "A"
Scale - 1/4" = 1'-0"

NOTE - All curb return radii shall be 12' except where otherwise noted on General Plan, or directed by City Engineer.



TYPICAL PLAN OF CURB & GUTTER AT RETURN "B"
Scale 1/4" = 1'-0"

Notes: See Profile and Elevation Levels for top of curb & flow line elevations. Inlet Guards are to be installed at all Culvert inlets that are remodelled under this Contract. Dimensions of Guards shall be determined in the field by the Engineer. See Sheet 3 for Detail of Curb Windows and Inlet Guards.



TYPICAL SECTIONS OF REINFORCED CONCRETE BOX CULVERTS
Scale - 1/4" = 1'-0"

PROJECT # 180
DEPARTMENT OF ENGINEERING
CITY OF SAN BERNARDINO
FIFTH STREET
"E" STREET TO SIERRA WAY
WIDENING

SUBMITTED BY: February 4, 1957
APPROVED: Ronell E. Wolf
REGISTERED CIVIL ENGINEER 2879
DRAWN BY: [Signature]
CHECKED BY: [Signature]
DATE: [Signature]
REFERENCE: [Signature]
REVISION: [Signature]

FIFTH STREET TO SIERRA WAY - WIDENING